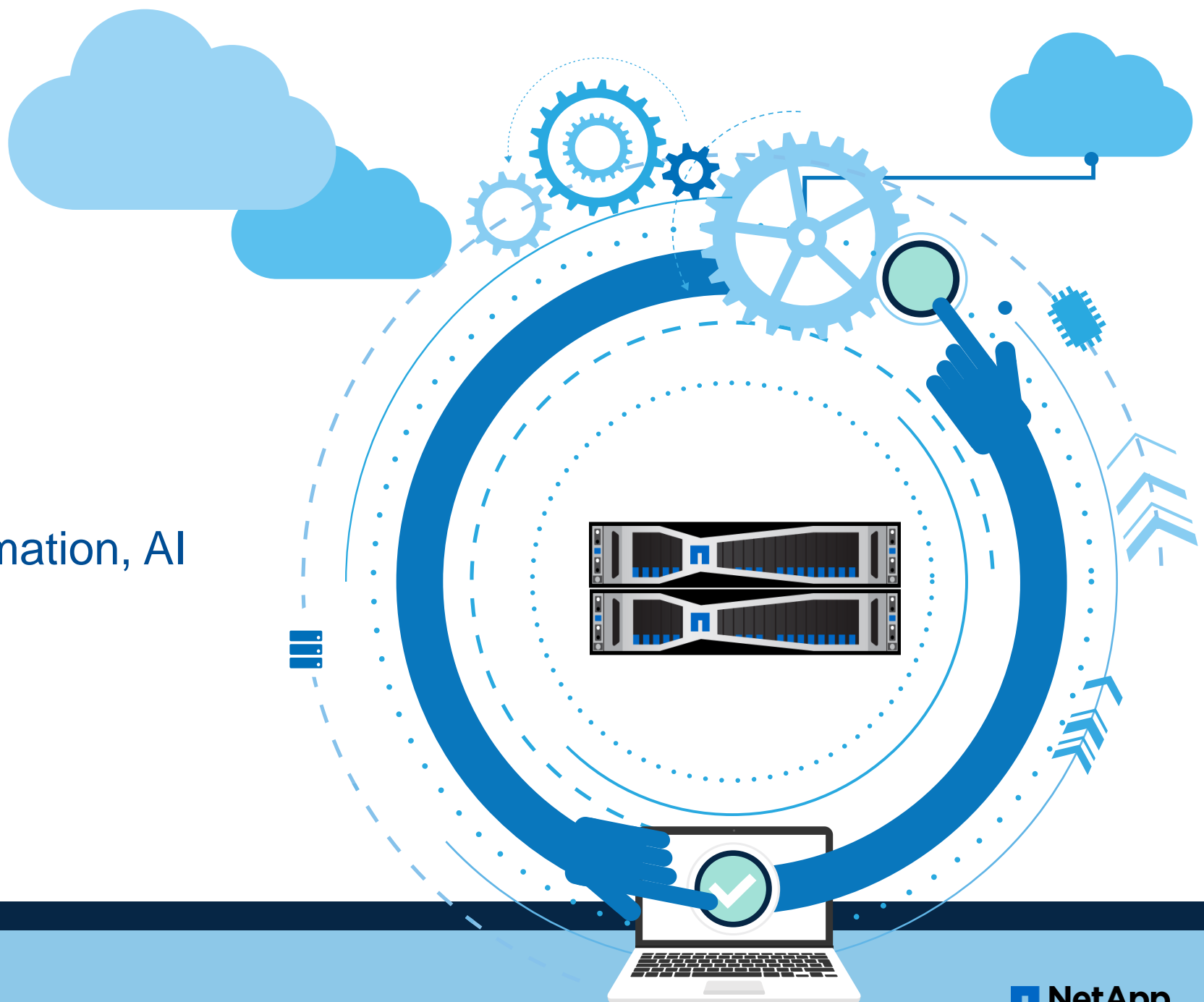


# The 4 A's

APIs, Algorithms, Automation, AI

Krithiwas Neelakantan

Director Cloud Business



# The world is fundamentally and rapidly changing

Driven by rising customer expectations

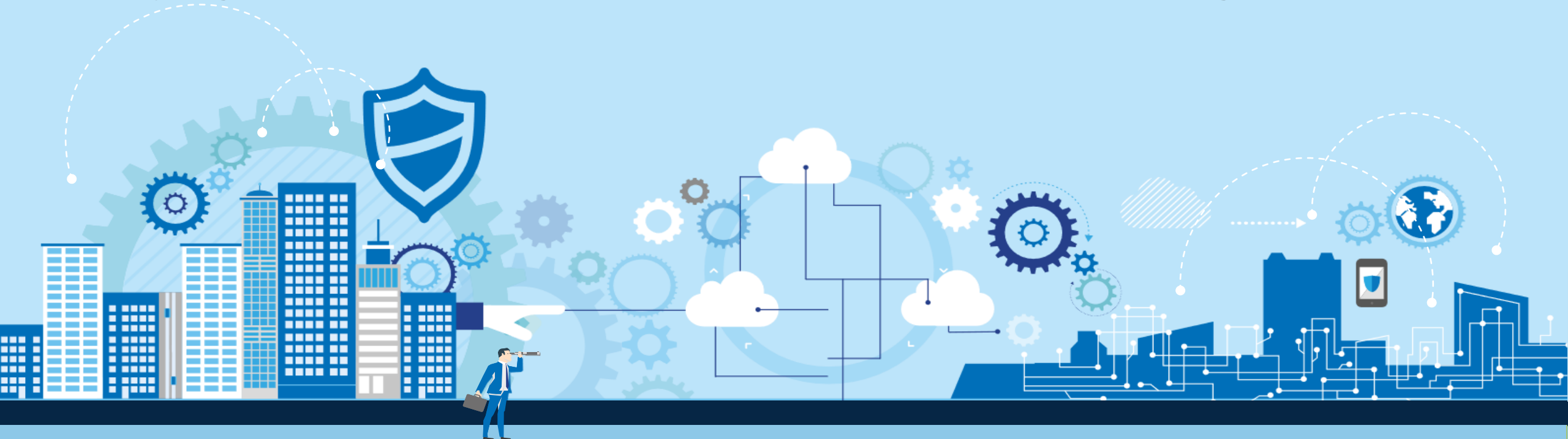
Unique customer experiences

Real-time updates

Any time, any place, any device

Everything connected

Intelligent interactions



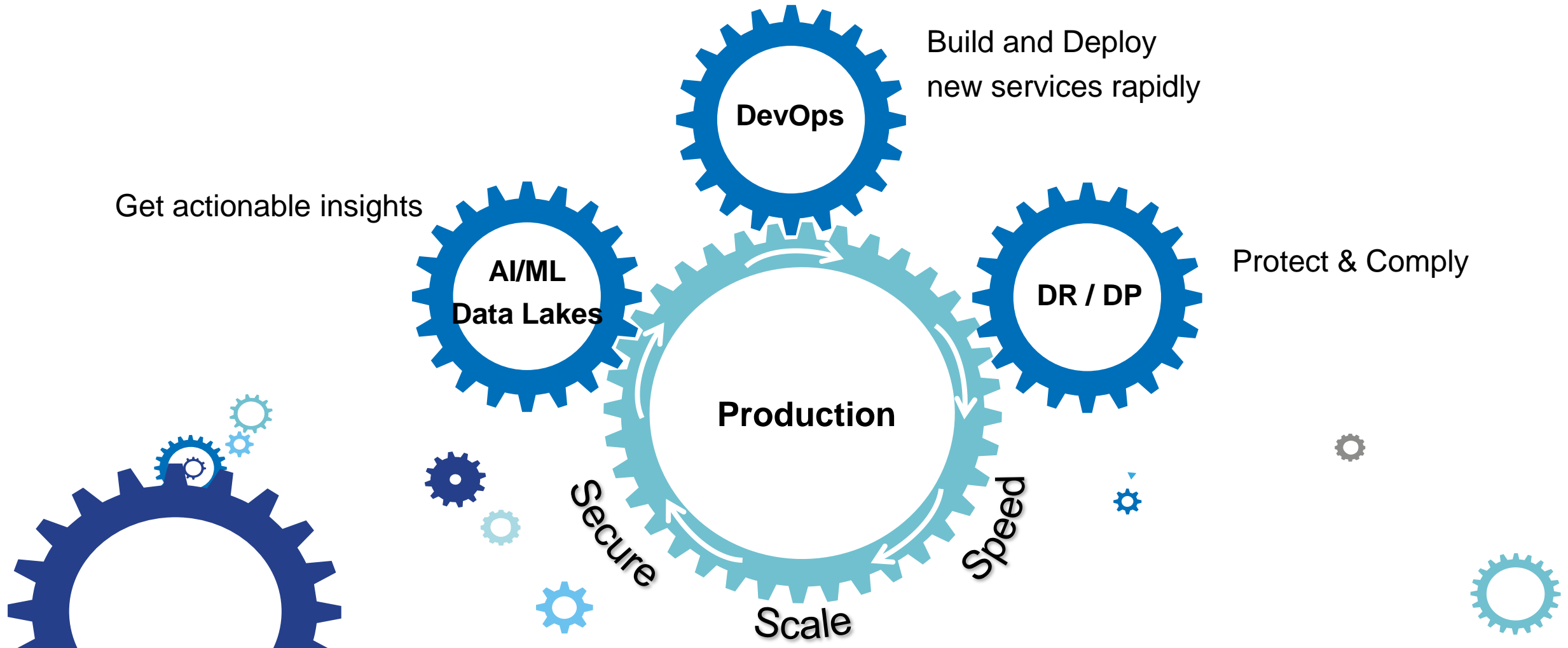
# When successful in their data-driven digital transformation, governments :

Enable new  
customer touchpoints

Rapidly deploy new  
G2G, G2B, G2C  
services

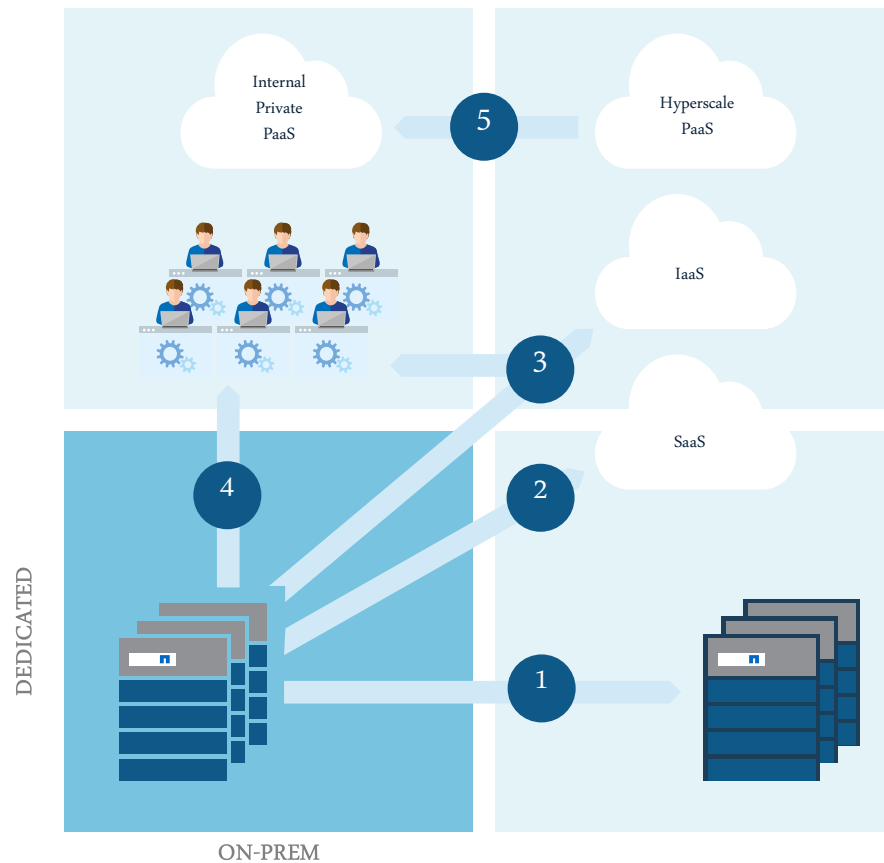
Optimize  
operations

# G2C Services – The JAM Imperative !



Migration of mature business apps into the “hybrid cloud” and migration of web-scale apps to on-premises

## Deployment Evolution

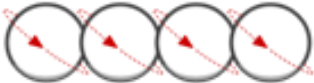


- 1 Outsource on similar infrastructure
- 2 Rent the app as a service (SaaS)
- 3 Shift between private and public cloud
- 4 Build internal private cloud (IaaS)
- 5 Revert to owned micro-services based infrastructure (PaaS)

# Application development & deployment evolution

## Development Process

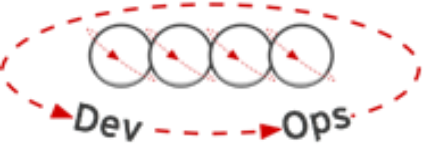
Waterfall



Agile



**DevOps**



## Application Architecture

Monolithic



N-Tier

**Microservices**



## Deployment & Packaging

Physical Servers



Virtual Servers

**Containers**



## Application Infrastructure

Datacenter



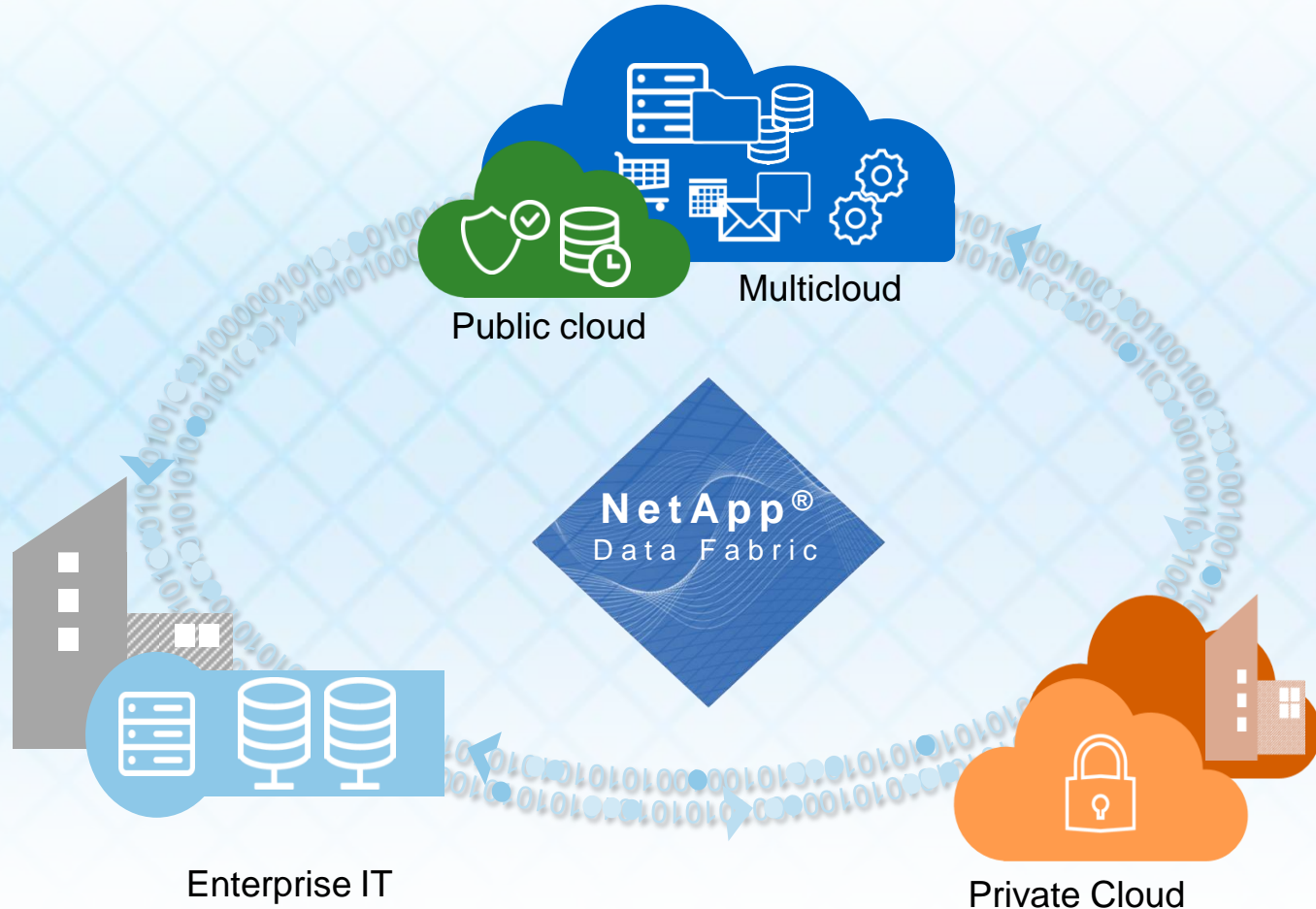
Hosted

**Cloud**



# The NetApp Data Fabric

Helping customers unleash data to address their business imperatives



**Harness**  
the power of the  
hybrid cloud

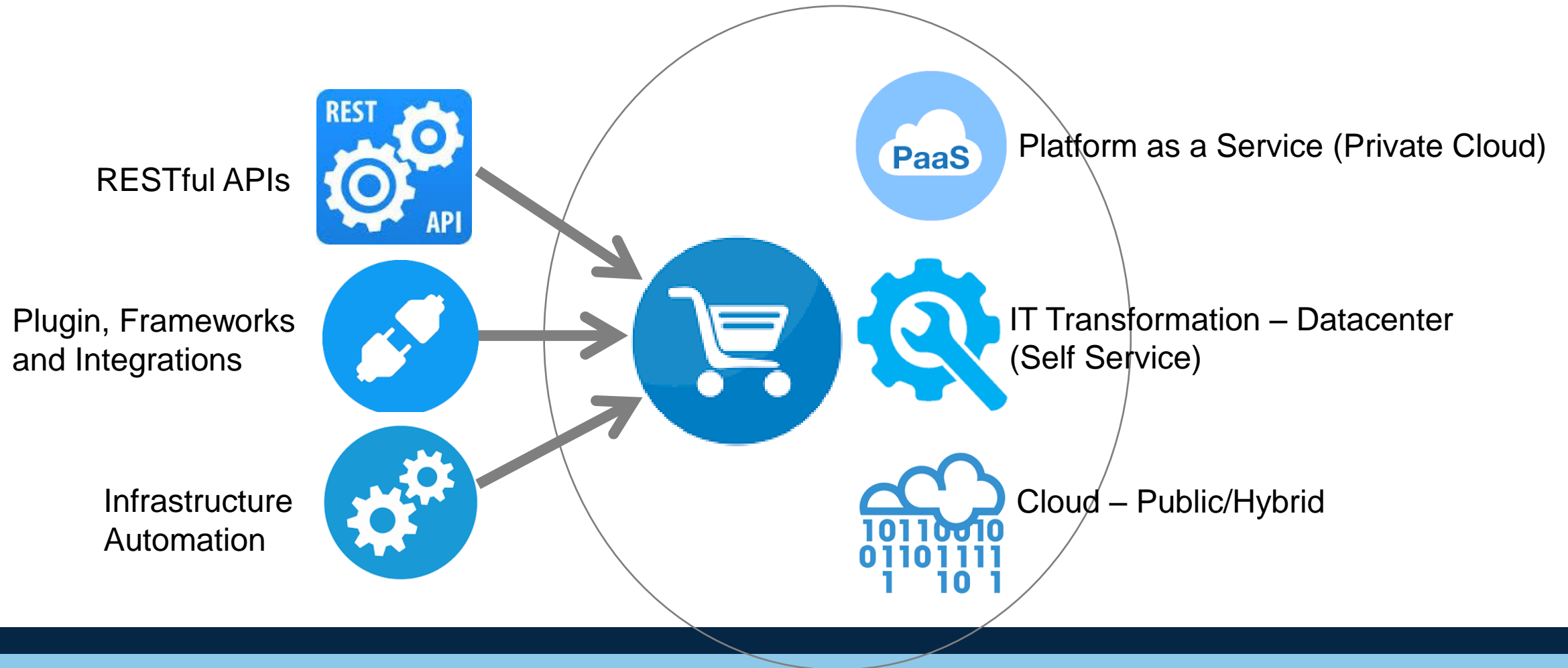


**Build**  
a next-generation  
data center



**Modernize**  
storage through  
data management

# Modernizing Apps and Impact on DX





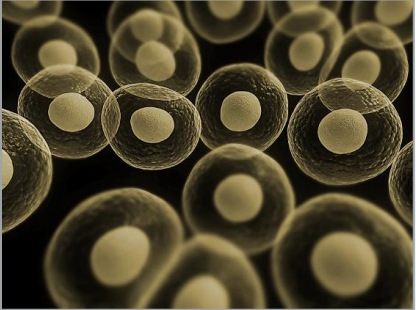
# AI - Uniquely Enabling A Range of Use Cases



Social, Media, Internet and Cloud



Cyber Security



Life Sciences



Defense Intelligence



Internet of Things



Financial Markets



Autonomous Machines/Vehicles

# Healthcare Use Case Example

Improving patient outcomes with data



**PREDICTION**

Predictive Medicine



**PREVENTION**

Wellness



**MANAGEMENT**

Population Health



**DIAGNOSIS**

Identification



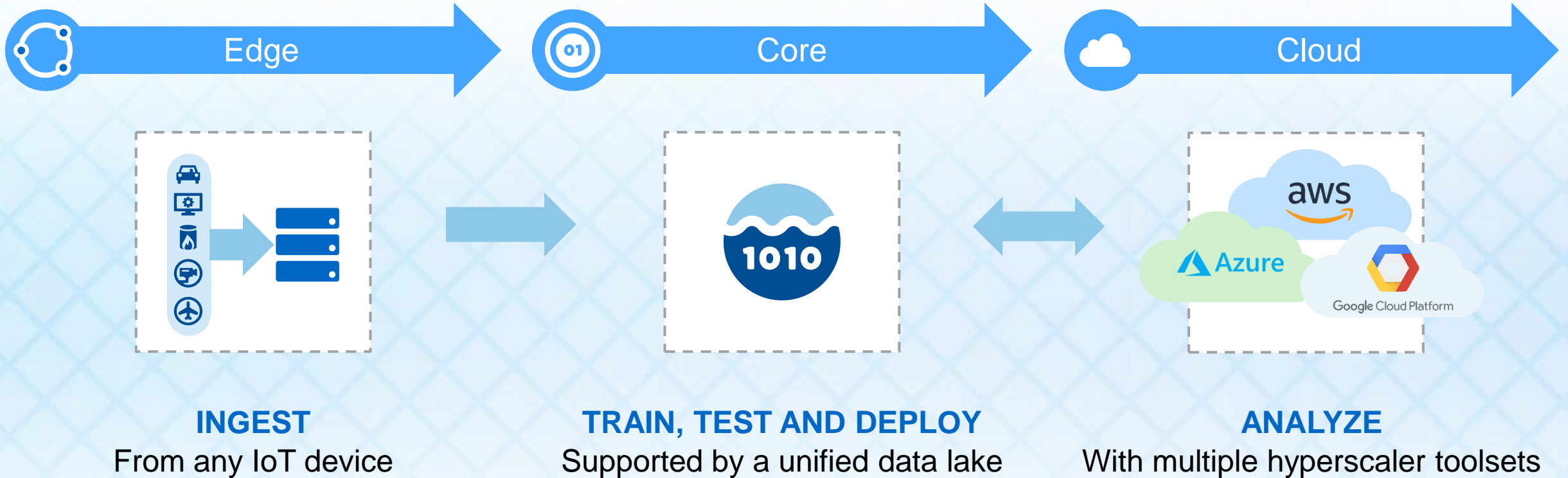
**DISEASE**

Treatment



# Enabling New Workloads

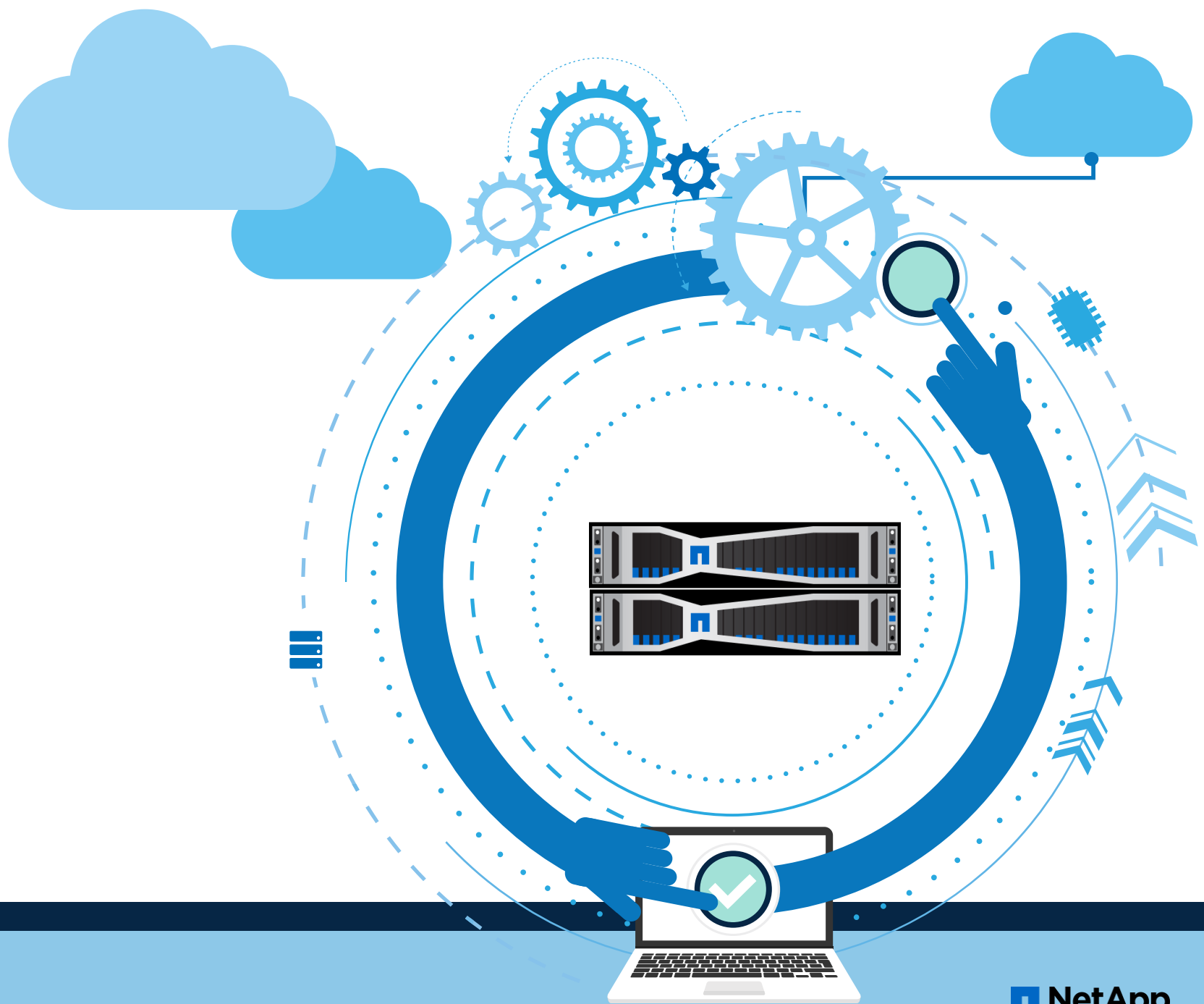
Single data pipeline for AI and deep learning from edge-to-core-to-cloud







Change the  
world with  
Data



Thank you !